



Use Your Smart
Phone Camera to
Learn More

List
\$459,000
Price



8958 SMITHFIELD DRIVE NW Brunswick Plantation



3



2



3

Your New Dream Home 8958 Smithfield Drive NW PROPERTY FEATURES

- Gated Community
- Screened Porch
- Vaulted Ceilings
- 3 Car Garage
- 15 Minutes from Sunset Beach
- Pond View
- Fireplace

What are you waiting for!?

Welcome to 8958 Smithfield Drive NW in the beautiful and amenity-rich community of Brunswick Plantation. This open and airy floor plan is the perfect amount of space for daily living and entertaining. The vaulted ceiling in the living room contributes to the spacious feel of this home. All windows are adorned with Plantation Shutters, and shiplap accents grace the kitchen island, a feature wall in the office, and the primary bathroom. There is no carpet in this home, as the laminate flooring runs throughout. With the light and neutral color palette, you will literally not need to do a thing to this home other than bring your belongings. There is plenty of room for friends and family to gather here!

Silver Coast Properties
Colleen Teifer

Call: 609.868.2393
carolinacolleen@gmail.com

www.carolinacolleen.com
www.silvercoastnc.com

Home Features



Year Built:

2022

Lot Size:

.25 acre

Home Size:

2,030

Heated Living Space

- Open floor plan
- Shiplap wall accents in office, primary bedroom, kitchen island
- Plantation shutters on all windows
- Established neighborhood
- Desirable wall oven
- Gas stove
- Generously sized screened porch
- 2 Walk in closet in primary suite
- Rainbird irrigation system with 8 zones
- Granite Countertops
- Laundry Room
- LVP throughout home
- Formal dinning area
- Fireplace
- Designated office
- Convenient to everyday shopping, grocery stores, and restaurants.
- 15 minutes from Sunset Beach and Ocean Isle Beach
- Security system through ADT
- 3 Car Garage

Community Amenities



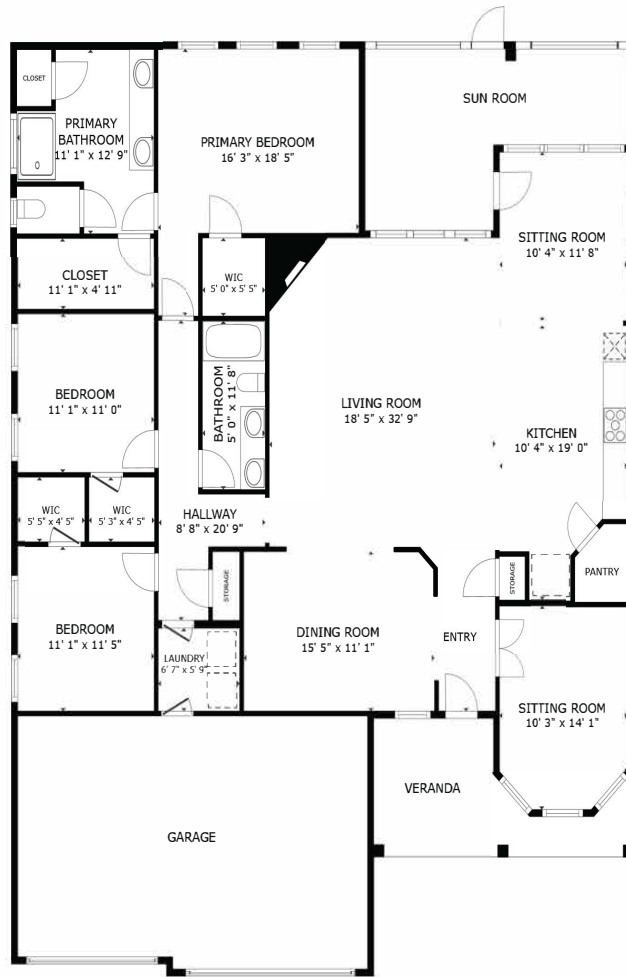
Brunswick Plantation Management company is Waccamaw Management, 843-237-9551 & HOA dues are \$1176/year (paid monthly, \$98/month)

- Gated Community
- Community pools
- Clubhouse
- Pickleball/tennis courts
- Fitness center
- Restaurants
- Golf Course
- Meeting Room



Important Contacts

- Municipal water and sewer through Brunswick County 910-253-2655, <https://www.brunswickcountync.gov/utilities/>
- Electric through BEMC 910-754-4391
- Cable/Internet through Focus Broadband 910-754-4311
- 2024 HOA dues \$1,176/year
- 2023 Property taxes were \$1,675.73
- Brunswick Plantation Management company is Waccamaw Management, 843-237-9551
- Propane tank is leased, above ground, and on an auto-fill schedule through Suburban Propane 843-293-1535



FLOOR PLAN

